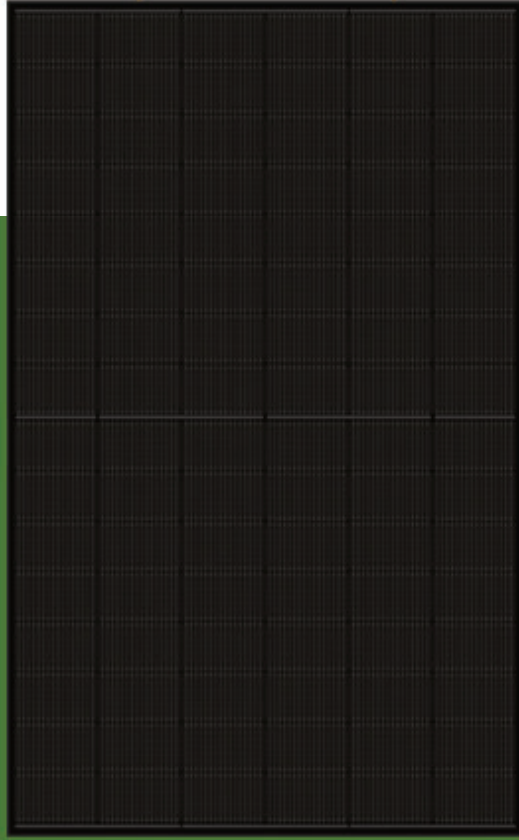


ACTIVE Collector

Photovoltaic and Thermal

SPVT-1810W



Beneficiary



Space Saving

Optimizing limited roof space to produce electricity and meet heating needs



Efficiency Improving

Lower operation temperature enhance electrical output



Multiple Coupling

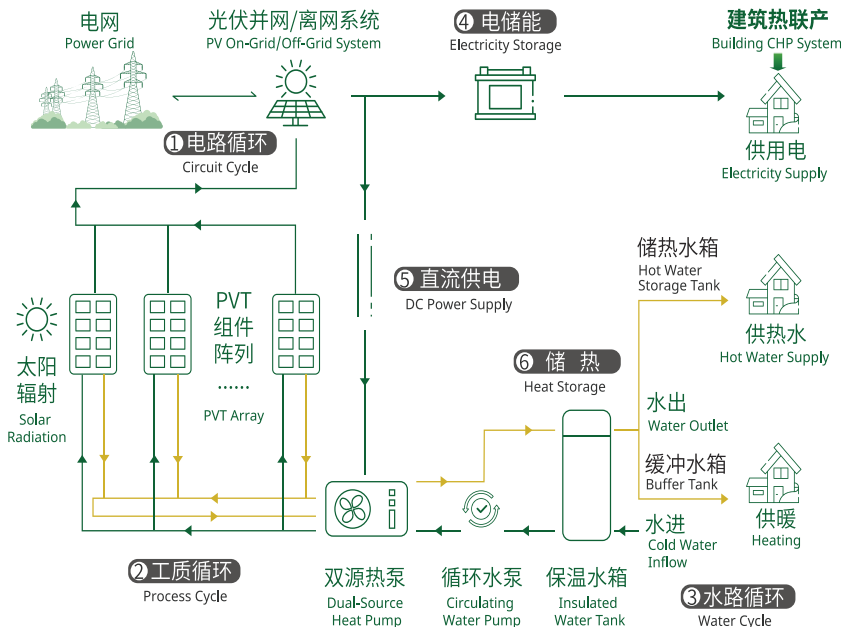
PV/Solar thermal and heat pumps coupled to meet the need of electricity, hot water and heating



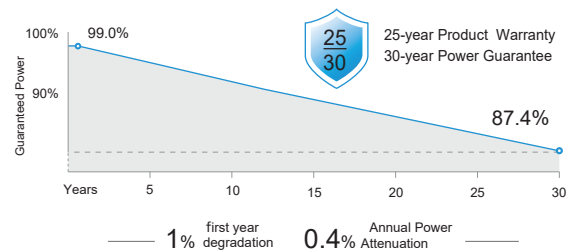
High Efficiency

Working as evaporator of the heat pump, 20-50% COP improving compared with the conventional air source heat pump

Total Power | PV | Thermal
1810W | **460W** | **1350W**



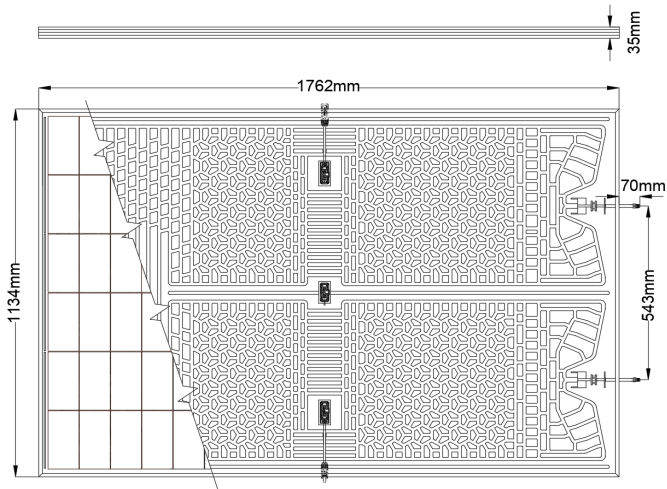
Performance Warranty



Comprehensive Products and System Certificates

- IEC61215/IEC61730
- ISO 9001: Quality Management System
- ISO 14001: Environmental Management System
- ISO14064: Greenhouse Gases Emissions Verification
- ISO45001: Occupational Health and Safety Management System
- ISO14067: Product Carbon Footprint Limited Assurance
- ISO14025: Environmental Product Declaration

PVT SIZE



ELECTRICAL DATA(STC)

PAMX (W)	450	455	460
VOC (V)	36.06	36.23	36.40
ISC (A)	15.66	15.71	15.76
VMP (V)	30.25	30.48	30.71
IMP (A)	14.88	14.93	14.97
Efficiency (%)	22.5	22.8	23

STC: Irradiance 1000W/m², Cell Temperature 25°C, Air Mass AM1.5.

MECHANICAL DATA

Solar Cells	N - type , Topcon (48*2)
Dimensions	1762X1134X35mm
Weight	35KG
Back	Aluminium Alloy
Frame	Polyurethane(Black)
J-Box	IP68, 3 diodes
Cables	4mm ² , 300mm
Connector	MC4

TEMPERATURE RATINGS

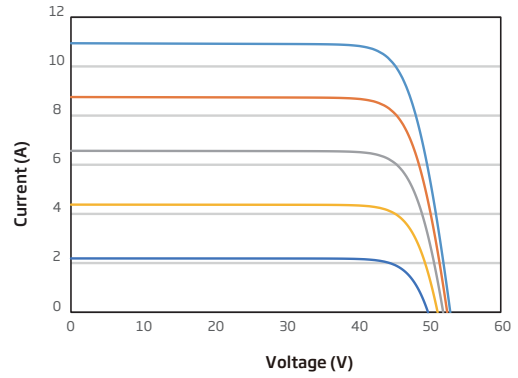
Temperature Coefficient of VOC	-0.250%/°C
Temperature Coefficient of ISC	+0.045%/°C
Temperature Coefficient of PMAX	-0.280%/°C
NOCT (Nominal Operating Cell Temperature)	42±2°C

OPERATING

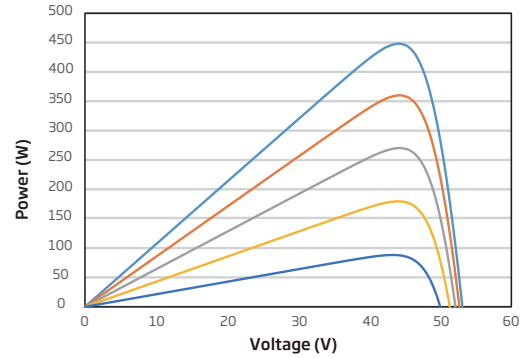
Maximum System Voltage	DC1500V
Tolerance-PMAX(Wp)	0~+5W
Operational Temperature	-40~85°C
Max Series Fuse Rating	25A
Wind/Snow Load	2400Pa/5400Pa
Medium	R410a/R290
Thermal Inlet	1/4" Male Thread
Thermal Outlet	3/8" Male Thread

曲线特性图(450W)

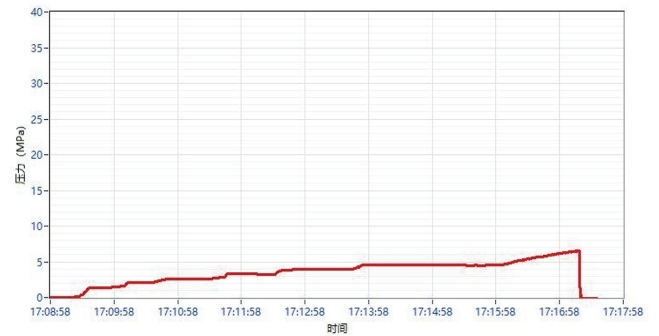
I-V CURVES OF PV MODULE (450W)



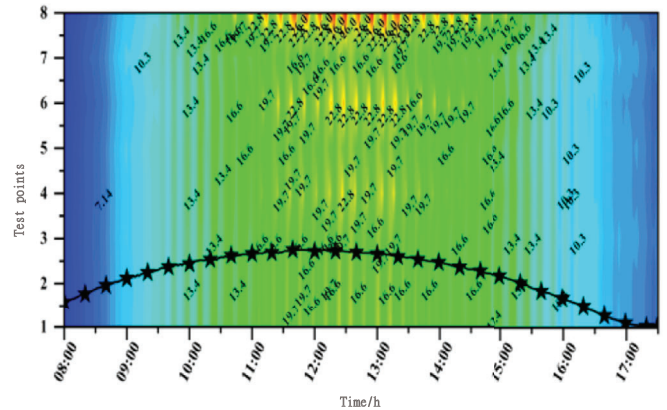
P-V CURVES OF PV MODULE (450W)



PRESSURE TEST(6.6MPa)



TEMPERATURE UNIFORMITY TEST



Specifications included in this datasheet are subject to change without notice.

Version No. : Global_EN_2025_03